

# Tiles

Designed by Wendy Sheppard  
Featuring Williamsburg's Annabelle Collection

SIZE: 65" x 74"

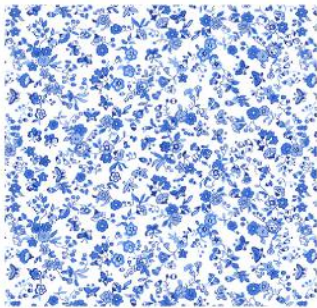


**PLEASE NOTE:** QUILT IMAGE SHOWN IS A DIGITAL REPRESENTATION, FABRIC LOOK MAY VARY ON YOUR PROJECT.  
VISIT OUR *FREE PROJECT* SECTION ONLINE FOR ANY PATTERN UPDATES BEFORE STARTING QUILT PROJECT.

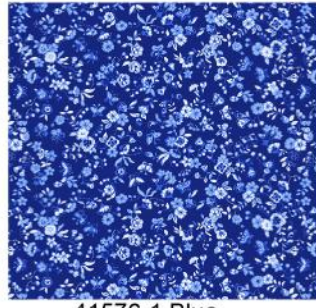
**WINDHAM** *W* **FABRICS**

# Tiles

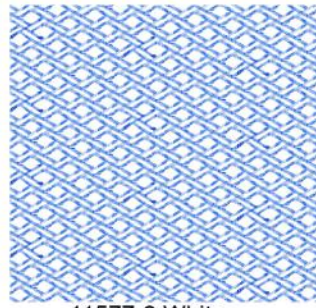
Page 2



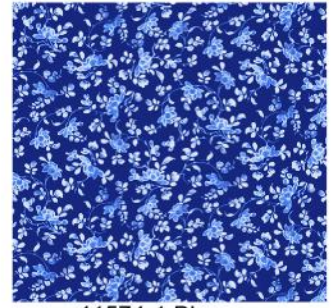
41576-2 White



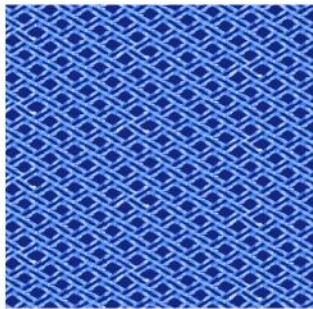
41576-1 Blue



41577-2 White



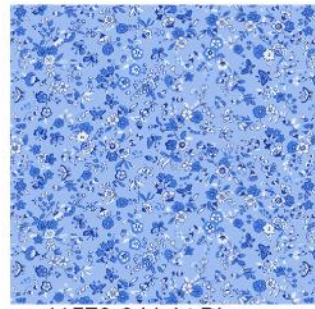
41574-1 Blue



41577-1 Blue



41572-X Multi



41576-3 Light Blue



41575-1 Blue

3 1/4 yards of Fabric 1: 37098-12 Chalk\*  
3/8 yard of Fabric 2: 41576-2 White  
7/8 yard of Fabric 3: 41576-1 Blue  
5/8 yard of Fabric 4: 41577-2 White  
1/4 yard of Fabric 5: 41574-1 Blue  
1/4 yard of Fabric 6: 41577-1 Blue  
3/4 yard of Fabric 7: 41572-X Multi  
3/4 yard of Fabric 8: 41576-3 Light Blue  
1 1/4 yards of Fabric 9: 41575-1 Blue  
4 1/2 yards of backing fabric  
71" x 80" piece of batting  
Basic sewing supplies

\*From Palette

# Tiles

Page 3

## **Cutting Instructions:**

### **From Fabric 1:**

1 (18 1/2" x 42") strip. Subcut 12 (1 1/2" x 18 1/2") rectangles and 12 (1 1/2" x 15 1/2") rectangles  
6 (2 3/4" x 42") strips. Piece strips and subcut 2 (2 3/4" x 56") and 2 (2 3/4" x 60 1/2") strips for inner border  
32 (2" x 42") strips. Subcut 664 (2") squares  
10 (1 1/2" x 42") strips. Subcut 18 (1 1/2" x 10 1/2") rectangles and 18 (1 1/2" x 9 1/2") rectangles

### **From Fabric 2:**

3 (3 1/2" x 42") strips. Subcut 36 (3 1/2") squares

### **From Fabric 3:**

3 (3 1/2" x 42") strips. Subcut 36 (3 1/2") squares  
7 (2 1/4" x 42") strips for binding

### **From Fabric 4:**

2 (3 1/2" x 42") strips. Subcut 18 (3 1/2") squares  
7 (1 1/4" x 42") strips. Piece strips and subcut 2 (1 1/4" x 57 1/2") and 2 (1 1/4" x 65") strips

### **From each of Fabric 5 and Fabric 6:**

2 (3 1/2" x 42") strips. Subcut 18 (3 1/2") squares

### **From Fabric 7:**

2 (10 1/2" x 42") strips. Subcut 9 (7 1/2" x 10 1/2") rectangles

### **From Fabric 8:**

2 (3 1/2" x 42") strips. Subcut 22 (3 1/2") squares  
6 (1 1/2" x 42") strips. Subcut 6 (1 1/2" x 18 1/2") rectangles and 6 (1 1/2" x 15 1/2") rectangles

### **From Fabric 9:**

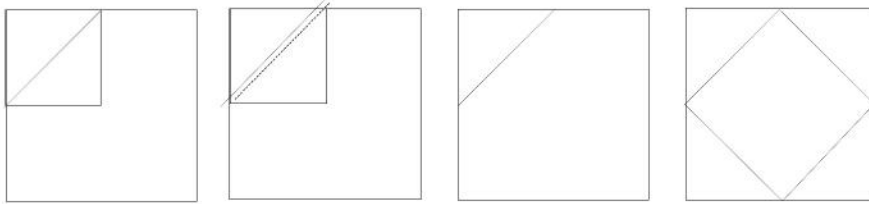
8 (4 1/2" x 42") strips. Piece strips and subcut 2 (4 1/2" x 65 1/2") and 2 (4 1/2" x 66 1/2") strips for outer border

# Tiles

Page 4

## **Block Assembly:**

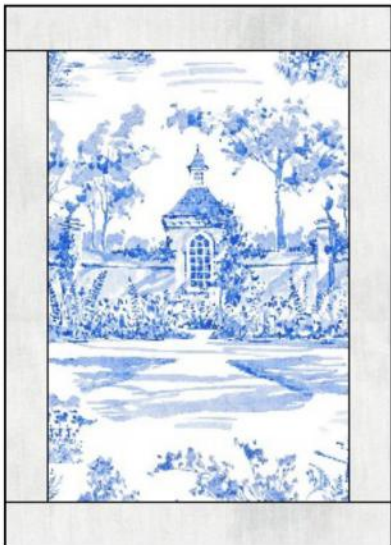
1. **Diamond-in-Square Units** (using blue on Fabric 6 unit as example): Draw a diagonal line on the wrong side of 1 (2") Fabric 1 square. Place square, right sides together, at a corner of 1 (3 1/2") Fabric 6 square. Sew on drawn line. Trim 1/4 " away from sewn line. Open and Fabric 1 corner triangle. Repeat with 3 additional (2") Fabric 1 squares for the remaining 3 corners of the same (3 1/2") Fabric 6 square to complete 1 Diamond-in-Square (DIS) unit.



Repeat to make the units specified from each fabric, combined with Fabric 1 corner squares:

- 4 units each: Fabric 2 and Fabric 3
- 2 units each: Fabrics 4, 5, 6, 8 and 9

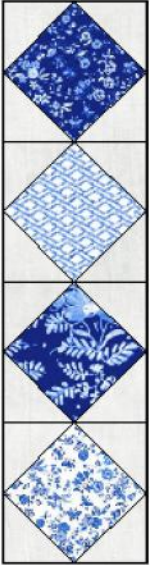
2. **Block Center:** Sew 2 (11/2" x 10 1/2") Fabric 1 rectangles to the opposite long sides of 1 (7 1/2" x 10 1/2") Fabric 7 rectangle. Sew 2 (11/2" x 9 1/2") Fabric 1 rectangles to the remaining opposite short sides of the Fabric 7 rectangle.



# Tiles

Page 5

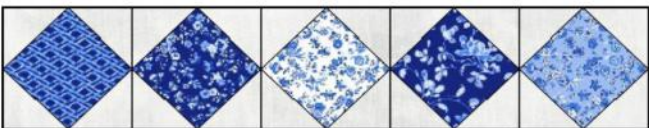
4. Arrange and sew 4 DIS units to make a column in the following order: Fabric 3, Fabric 4, Fabric 9, Fabric 2. Repeat to make a second column.



Sew columns to opposite long sides of the block center.



5. Arrange and sew 5 DIS units to make a row in the following order: Fabric 6, Fabric 3, Fabric 2, Fabric 5 and Fabric 8. Repeat to make a second row.



# Tiles

Page 6

Sew DIS rows to the top and bottom of the block center to complete one block.



6. Repeat steps 1-5 to make a total of 9 blocks.

## **Quilt Assembly:**

1. Arrange and sew together 1 (1 1/2" x 18 1/2") Fabric 8 and 2 (1 1/2" x 18 1/2") Fabric 2 rectangles to complete a vertical sashing strip. Repeat to make a total of 6 vertical sashing strips.



## **Horizontal Sashing Stripe Blocks Assembly**

2. Arrange and sew together 1 (1 1/2" x 15 1/2") Fabric 8 and 2 (1 1/2" x 15 1/2") Fabric 2 rectangles to complete a horizontal sashing strip. Repeat to make a total of 6 horizontal sashing strips.



# Tiles

Page 7

## Quilt Assembly

3. Arrange 3 pieced blocks and 2 vertical sashing strips to make a row. Repeat to make a total of 3 rows.



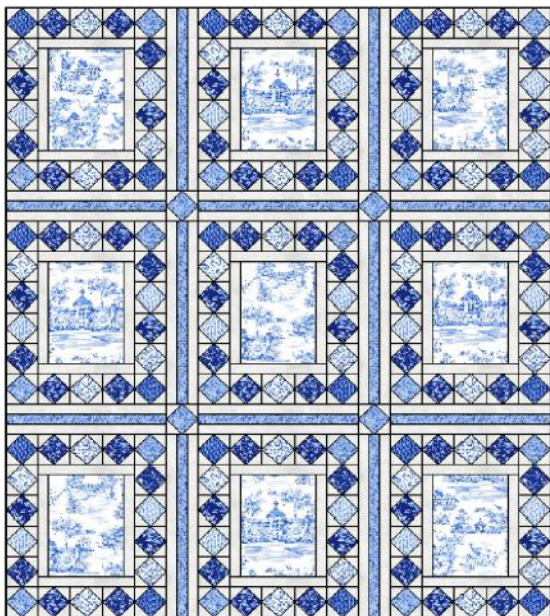
4. Make 4 additional DIS units using 3 1/2" Fabric 8 squares and 2" Fabric 1 squares.



Arrange and sew together 3 horizontal sashing strips with 2 DIS units to make a sashing row. Repeat to make a total of 2 rows.



5. Sew block and sashing rows together to complete the quilt center as shown.



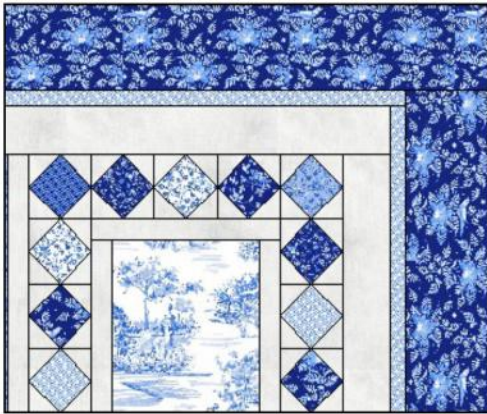
# Tiles

## Page 8

6. Inner border: Sew 2 (2 3/4" x 60 1/2") Fabric 1 strips to the opposite long sides of quilt center. Sew 2 (2 3/4" x 56") Fabric 1 strips to the remaining opposite short sides of quilt center.

7. Middle border: Sew 2 (1 1/4" x 65") Fabric 4 strips to the opposite long sides of quilt center. Sew 2 (1 1/4" x 57 1/2") Fabric 4 strips to the remaining opposite short sides of quilt center.

8. Outer border: Sew 2 (4 1/2" x 66 1/2") Fabric 9 strips to the opposite long sides of quilt center. Sew 2 (4 1/2" x 65 1/2") Fabric 9 strips to the remaining opposite short sides of quilt center to complete quilt top.



### Quilting Instructions:

9. With the backing fabric laying taut, place batting and then quilt to form quilt sandwich. Baste the sandwich. Quilt as desired. Use the 7 (2 1/4" x 42") Fabric 3 strips to bind the quilt.